



Editor

Aida Bulucea

Associate Editors

Jon Bryan Burley

Patricia L. Macheimer

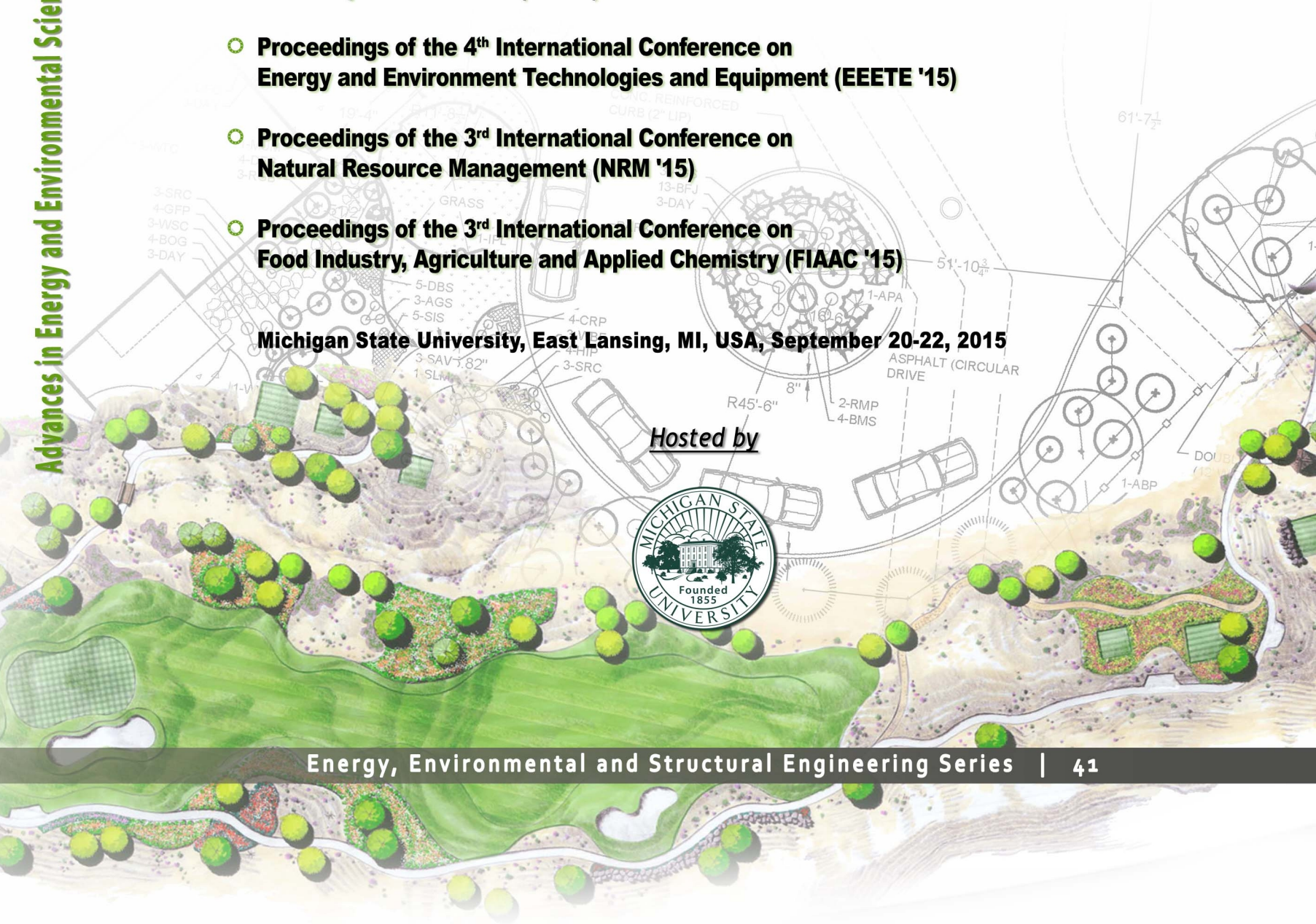


Advances in Energy and Environmental Science and Engineering

- **Proceedings of the 7th International Conference on Landscape Architecture (LA '15)**
- **Proceedings of the 4th International Conference on Energy and Environment Technologies and Equipment (EEETE '15)**
- **Proceedings of the 3rd International Conference on Natural Resource Management (NRM '15)**
- **Proceedings of the 3rd International Conference on Food Industry, Agriculture and Applied Chemistry (FIAAC '15)**

Michigan State University, East Lansing, MI, USA, September 20-22, 2015

Hosted by





ADVANCES in ENERGY and ENVIRONMENTAL SCIENCE and ENGINEERING

**Proceedings of the 7th International Conference on Landscape Architecture
(LA '15)**

**Proceedings of the 4th International Conference on Energy and Environment
Technologies and Equipment (EEETE '15)**

**Proceedings of the 3rd International Conference on Natural Resource
Management (NRM '15)**

**Proceedings of the 3rd International Conference on Food Industry, Agriculture
and Applied Chemistry (FIAAC '15)**

**Michigan State University, East Lansing, MI, USA
September 20-22, 2015**

Hosted by



ADVANCES in ENERGY and ENVIRONMENTAL SCIENCE and ENGINEERING

Proceedings of the 7th International Conference on Landscape Architecture (LA '15)

Proceedings of the 4th International Conference on Energy and Environment Technologies and Equipment (EEETE '15)

Proceedings of the 3rd International Conference on Natural Resource Management (NRM '15)

Proceedings of the 3rd International Conference on Food Industry, Agriculture and Applied Chemistry (FIAAC '15)

**Michigan State University, East Lansing, MI, USA
September 20-22, 2015**

Published by WSEAS Press

www.wseas.org

Copyright © 2015, by WSEAS Press

All the copyright of the present book belongs to the World Scientific and Engineering Academy and Society Press. All rights reserved. No part of this publication may be reproduced, stored in a retrieval system, or transmitted in any form or by any means, electronic, mechanical, photocopying, recording, or otherwise, without the prior written permission of the Editor of World Scientific and Engineering Academy and Society Press.

All papers of the present volume were peer reviewed by no less than two independent reviewers. Acceptance was granted when both reviewers' recommendations were positive.

ISSN: 2227-4359

ISBN: 978-1-61804-338-2

ADVANCES in ENERGY and ENVIRONMENTAL SCIENCE and ENGINEERING

**Proceedings of the 7th International Conference on Landscape Architecture
(LA '15)**

**Proceedings of the 4th International Conference on Energy and Environment
Technologies and Equipment (EEETE '15)**

**Proceedings of the 3rd International Conference on Natural Resource
Management (NRM '15)**

**Proceedings of the 3rd International Conference on Food Industry, Agriculture
and Applied Chemistry (FIAAC '15)**

**Michigan State University, East Lansing, MI, USA
September 20-22, 2015**

Editor:

Prof. Aida Bulucea, University of Craiova, Romania

Associate Editors:

Prof. Jon Bryan Burley, Michigan State University, USA

Prof. Patricia L. Machemer, Michigan State University, USA

Committee Members-Reviewers:

Rong Chen

Pat L. Crawford

Robert Dalton

Peilei Fan

Donald Mark Fox

Mohamed El-Gafy

Suk-Kyung Kim

Eunsil Lee

Sinem Mollaoglu (Korkmaz)

Ruya Yilmas

Cyril Fleaurant

Biagio Guccione

Jose Beltrao

Ioannis Ispikoudis

Bruce Sharky

Giuseppe Genon

Inga Straupe

Jose Luis Miralles

Carlos Guerrero

Giuseppe Luigi Cirelli

Francesco Ferrini

Sarma Cakula

Germano Lambert-Torres

Jiri Klima

Goricane Darko

Ze Santos

Ehab Bayoumi

Luis Tavares Rua

Igor Kuzle

Nikolay Djagarov

Darko Goricane

Maria do Rosario Alves Calado

Gheorghe-Daniel Andreescu

Patricia Jota

Frangiskos V. Topalis

Bharat Doshi

Gang Yao

Lu Peng

Pavel Loskot

F. Akgun

Y. Baudoin

M. Dasenakis

G. E. Froudakis

R. S. R. Gorla

M. Heiermann

C. Helmis

I. Kazachkov

A. M.A. Kazim

G. Kiriakidis

D. Kotzias

A. Kurbatskiy

S. Linderoth

P. Lunghi

C. Makris

J. Van Mierlo

S. Ozdogan

P. Pardalos

I. Poullos

F. Rigas

S. Sohrab

A. Stamou

A. I. Zouboulis

Z. A. Vale

Corina Carranca

Ahmet Arslan

Kemal Tutuncu

Humar Kahramanli

Krisztina Uzuneanu

Nabil Mohareb

Davorin Kralj

Rodica Badescu

Giri Kattel

Adrian Turek Rahoveanu

Petr Mastny

Oguz Arslan

Mihaela Dudita

José Nunes

Al Emran Ismail

Calbureanu Popescu Madalina Xenia

Andrei Madalina-Teodora

Tejinder Saggu

Monica Dumitrascu

Khaled Galal Ahmed

Catarina Luisa Camarinhas

Zohreh Salavatizadeh

Ahadollah Azami

Harry Coomar Shumsher Rughooputh

Ramin Khodafarin

Maria De Fatima Nunes De Carvalho

Grabara Janusz

Denizar Cruz Martins

Diana-Elena Alexandru

Alina Adriana Minea

Saeid Eslamian

Mioara Chirita

Heimo Walter

Hongjun Liu

Mehdi Seyyed Almasi

Muhammad Musaddique Ali Rafique

George D. Verros
Walid Oueslati
Claudia A. F. Aiub
Catalin Croitoru
Damelys Zabala
Elena Scutelnicu
Hugo Cruz-Suarez
Miguel Angel Vigil Berrocal
Andrey Dmitriev
Jose Alberto Duarte Moller
Ahmet Ertek
Konstantin Volkov
Mariya Aleksandrova

Table of Contents

<u>MSU Special Plenary Lecture: 30 Years of Finding Lost Space</u>	10
<i>Roger Trancik</i>	
<u>Plenary Lecture 1: The Effectiveness of Postindustrial Redevelopment towards Urban Sustainability – The Portuguese Experience</u>	11
<i>Luis Loures</i>	
<u>A Cluster Analysis Comparison of Classical Chinese Gardens with Modern Chinese Gardens</u>	13
<i>Yiwen Xu, Jon Bryan Burley, Patricia Machemer, April Allen</i>	
<u>Built Environment Core Values and the Creation of a New University School</u>	24
<i>Pat Crawford, Rohit Menon, Robert Dalton</i>	
<u>Belle Isle State Park, Detroit: The Case of Race</u>	30
<i>Barbara Firman-McManus, Pat Crawford</i>	
<u>Core Elements of a World Class City</u>	37
<i>Pat Crawford, Robert Dalton, Marybeth Graeber, Scott Witter</i>	
<u>Invitation for the Ancient Tomb’s Owner to Dance with Today’s People: the Protection and Landscape Renovation of Shuiyuan Zeng Tomb</u>	43
<i>Hui Wang, Xufeng Cao</i>	
<u>Revealing People’s Patterns of Occupation – Mondego Park Case-Study</u>	49
<i>Frederico Meireles Rodrigues, Luis Loures, Laura Roldão E. Costa</i>	
<u>The Effectiveness of Postindustrial Redevelopment Towards Urban Sustainability – the Portuguese Experience</u>	55
<i>Luis Loures, Frederico Meireles, Laura Costa Ana Loures, José Nunes</i>	
<u>Public Transport on Rails and Green Public Spaces</u>	60
<i>Laura Costa, Frederico Meireles, Luis Loures</i>	
<u>Energy-Saving Solutions for a UHT Milk Plant</u>	64
<i>Lorenzo Damiani, Roberto Revetria, Pietro Giribone</i>	
<u>Efficiency Improvement of a Printing House by Means of Combined Heat and Power Installation</u>	68
<i>Lorenzo Damiani, Roberto Revetria, Pietro Giribone</i>	
<u>Survey and Comparison of the Project Management Softwares Used by Engineering, Procurement and Construction Companies</u>	73
<i>Lorenzo Damiani, Roberto Revetria, Iva Svilenova, Pietro Giribone</i>	
<u>Survey and Comparison of Supplier Chain Management Softwares</u>	82
<i>Lorenzo Damiani, Roberto Revetria, Ivan Androvski, Pietro Giribone</i>	

<u>A Comparison of Forecast Models to Predict Weather Parameters</u>	88
<i>Guido Guizzi, Claudio Silvestri, Elpidio Romano, Roberto Revetria</i>	
<u>Leadership Role and Evaluation in Creating Sustainable Organizations by Reducing Impact Environmental</u>	97
<i>Stan Luciana Cristiana</i>	
<u>Investigation and Analysis on Key Issues Deteriorating Water Quality in a Water-Scarce Country: Case of South Africa</u>	102
<i>Joseph Kapuku B.</i>	
<u>Influence of Climate Change on Surface Water a Study for South Africa</u>	109
<i>Adesoji Tunbosun Jaiyeola</i>	
<u>Natural Resource and Vehicle Miles Travel (VMT), Value Added and Economic Growth: The Case of Nigeria's Vision 20:2020</u>	117
<i>Adekola Owolabi, Oludare Owolabi</i>	
<u>Modelling Streamflow-Sediment Relationship Using Genetic Programming</u>	124
<i>Adesoji Tunbosun Jaiyeola</i>	
<u>Quantifying Potential Displacements and Land-Use Conflicts in Mining Regions</u>	130
<i>Abdul-Wadood Moomen</i>	
<u>Marine Macroalgae with Antioxidant, Antimicrobial and Cytotoxic Potential</u>	142
<i>Branislav Ranković, Marijana Kosanić, Tatjana Stanojković</i>	
<u>Additional Losses of Electric Energy in Electric Networks of 0,38 kV of Russia and Mongolia to the Unbalance of the Phase Currents and the Means of Decrease in these Losses</u>	152
<i>Igor Naumov</i>	
<u>Combined Economic Emission Dispatch with Cubic Criterion Functions and Various Price Penalty Factors to Reduce SO₂, NO_x and CO₂ Gas Emissions</u>	159
<i>Ziane Ismail, Benhamida Farid, Graa Amel</i>	
<u>Opportunities and Challenges for Climate-Smart Agriculture</u>	166
<i>Harijono Djojodihardjo, Desa Ahmad</i>	
<u>Awareness of Health Risks Posed by Phosphate Containing Caffeinated Drinks in South Africa</u>	178
<i>Fikru Tafesse</i>	
<u>Effects of the Wavy Surface on a Solar Collector</u>	186
<i>Mayouf Si Abdallah</i>	
<u>A Case Study of Wind Driven Rain in Tropical Building</u>	193
<i>C. H. Lim, M. Alkhair, S. Mirrahimi, E. Salleh, K. Sopian</i>	
<u>Lighting Protection of Gilan Wind Power Plants in Iran</u>	206
<i>Shiva Shavandi, Zahra Shavandi, Esmat Aghabagloo</i>	

<u>A New Instrument for Comprehensive Study of Infrared Remote Sensing of Physiological Properties of Vegetation Covers</u>	213
<i>Taiwo Adekolawole, Timothy Oke</i>	
<u>Optimal Power Management & Regeneration Schema to Support Green Technology in Mobile Computing Devices for Better Battery Backup</u>	223
<i>Shahbaz Pervez, Faheem Babar, Nasser H. Abosag</i>	
<u>Authors Index</u>	232

MSU Special Plenary Lecture

30 Years of Finding Lost Space



Professor Roger Trancik, FASLA

Professor Emeritus of Landscape Architecture and City and Regional Planning
Cornell University
USA

Abstract: The question of 'lost space' persists today in the modern city worldwide - at many different scales: abandoned industrial zones, wastelands along highways, railways, waterways, vacant sites cleared for urban renewal, vast areas paved over for the automobile, unoccupied/underutilized buildings and empty lots, gaps and barriers between neighborhoods and districts. While these conditions are problematic, they offer important opportunities for landscape architects, planners and urban designers to transform contemporary city landscapes and to revitalize the heritage of urban places. Even the most unproductive and unappealing landscapes may hide a rich history, the layers of which can be revealed and expressed through research and design investigation.

Reclaiming sites lost to productive use can improve city form if principles of sustainable urbanism are applied: figure-ground relationships between built and open; scale and proportion of public space relative to human use; coherent linkages and connections between natural and cultural resources; integration of old and new... Designers and planners should look at lost spaces as a normal part of a city's evolution. As such, they provide grounds for testing new spatial strategies while respecting regional and local traditions.

This presentation will explore the lost space theme through Professor Trancik's academic and professional projects. First published 30 years ago in his textbook *Finding Lost Space: Theories of Urban Design*, the question remains timely and relevant today in the practice of landscape architecture.

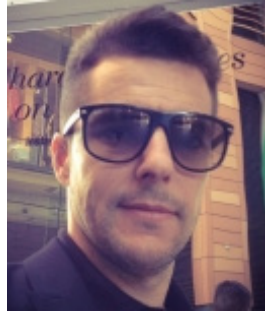
Brief Biography of the Speaker: Roger Trancik, FASLA, is professor emeritus of landscape architecture and city and regional planning at Cornell University, and founding principal of Urban Design Consultants, Ithaca New York. He has served on the Cornell faculty since 1982, and from 1970 to 1982 was professor of urban design at Harvard University Graduate School of Design.

Roger has held visiting professorships at Chalmers University of Technology in Sweden, the Royal Academy of Fine Arts in Denmark, Wuhan University in China, and was professor-in-residence in Rome for Cornell and the University of Colorado. Trancik has published several national award-winning books including *Finding Lost Space*, and *Hamlets of the Adirondacks*. His work *Layers of Rome*, an educational CD-ROM sponsored by the National Endowment for the Arts and Graham Foundation for Advanced Studies in the Fine Arts, won the national Communications Award from the American Society of Landscape Architects. Professor Trancik has to his record 45 professional planning studies, journal articles and scholarly papers on urban design, and has lectured at many universities worldwide. He has been keynote speaker at international conferences and consultant to a variety of development corporations and planning commissions. In 1990, Professor Trancik was elected Fellow of the American Society of Landscape Architects, and in 2004 appointed U.S. Senior Fulbright Scholar to Panama, Central America. Trancik served as chair of NEA and NYSCA Design Arts panels, City of Cambridge Zoning Board, ASLA National Committees and U.S. Fulbright Screening Committee. He has authored/curated art gallery exhibits on Roman Views and Panama's Garden Cities and has worked with leading professional design and planning firms including Sasaki Associates, Ralph Erskine Architects and CBT Architects.

During his years as faculty member at Cornell and Harvard he taught core-curriculum lecture and seminar courses on urban design, landscape architecture and planning and conducted numerous graduate and undergraduate studios in New York, Boston, Panama, China, Rome and Scandinavia.

Plenary Lecture 1

The Effectiveness of Postindustrial Redevelopment towards Urban Sustainability – The Portuguese Experience



Professor Luis Loures

Instituto Politecnico de Portalegre
IPP, Portalegre

&

Centre for Spatial and Organizational Dynamics - CIEO
University of Algarve

&

University of Tras-os-Montes and Alto Douro, UTAD
Portugal

E-mail: lcloures@esaelvas.pt

Abstract: The need for greater environmental protection coupled with the appearance of several postindustrial derelict areas and the increasing public awareness to the necessity to reclaim degraded landscapes provide great challenges not only for landscape architects and reclamation professionals but also for planners, natural resource managers and policy makers. Though this problem encompasses numerous categories of manufacturing infrastructure all over the world, this paper will focus only on urban postindustrial sites, where reclamation - redevelopment processes play an important role in city redevelopment throughout the creation of multifunctional sites able to fulfill peoples needs at different levels, while contributing to urban sustainability. Though it is widely recognized that the reclamation of postindustrial landscapes constitutes an important strategy towards city's development, it is normally acknowledged that redevelopment projects are generally associated to multidimensional objectives based somehow on a twist of sociocultural, economic and environmental issues. This paper aims to exemplify the importance of these projects at the aforementioned levels by presenting a set of 18 redevelopment proposals/projects where it is possible to identify the relevance of each of the sustainability dimensions to urban development. By assessing and identifying the significance and the benefits associated to postindustrial redevelopment, this article shows that postindustrial landscapes should be viewed as a resource and its recovery as an opportunity.

Brief Biography of the Speaker: Luis Loures is a Landscape Architect, Professor both at the Polytechnic Institute of Portalegre and at the University of Tras-os-Montes e Alto Douro, who holds a Ph.D. in Urban Planning, focusing the relevance of industrial heritage not only in urban planning procedures but also in the design process. Since he graduated he has published several peer reviewed papers at the national and international levels and he has been a guest lecturer both at Michigan State University (USA), and at University of Toronto (Canada) where he developed part of his Ph.D. research with the Financial support from the Portuguese Foundation for Science and Technology (Ph.D. grant). On recent years he had teach in several courses in different Universities, both at Ph.D and Master levels including the University of Tras-os-Montes e Alto Douro – Portugal, Letterkenny Institute of Technology – Ireland, the University of Algarve – Portugal, The University of Santiago de Compostela, Ryerson University – Canada and Nürtingen University – Germany, mainly regarding the fields of landscape architecture, urban and environmental planning, sustainable development, and the sociocultural and economic reconversion of depressed areas in shrinking cities.