

The mobile monitoring and controlling of real systems via the GSM

M. MATÝSEK, M. ADÁMEK, P. NEUMANN & T. KARAFIÁT

Department of Computer and Communication Systems

Thomas Bata University in Zlín

Nad Stráněmi 4511, 760 05 Zlín

CZECH REPUBLIC

matysek@fai.utb.cz

Abstract: - The goal of this work was to design and realize a remote real system monitoring and controlling with the help of a mobile phone in the client/server structure. The client segment running in a GSM mobile phone was realized in the JME (Java Micro Edition) environment. Internet data transfer is supported by GPRS/EDGE service and TCP/IP protocol. The server segment was created in JSE (Java Standard Edition). A simple desktop application controlled via the system concerned is a part of the server segment running on a PC.

Key-Words: - mobile monitoring, mobile control, real systems, GSM, GPRS/EDGE, Java

1 Introduction

There are not many professional systems for the remote monitoring and controlling of simple real systems via GSM GPRS/EDGE data services in Czech Republic.

The mobile monitoring and controlling system has been exclusively designed for simple real systems with slower events occurrence because of limited response time with mobile GPRS/EDGE data transfer.

This work was inspired with some similarly working mobile phone applications. These applications are programmed in Java language, and for example, they are intended for sending SMS to the GSM operators' unpaid SMS portals.

2 The solution proposal

The client/server architecture has been chosen for a real system controlling and monitoring via mobile phone. The client application has been realized in JME again because of its massive support by mobile phone producers. The applications are easily transferable among mobile phones independently from brand or platform.

The following main requirements are imposed on the client application:

- It should connect to the server exclusively when needed and send minimum data for sake of low costs
- It sends commands for system setting according to the user requirements
- It receives information on real system latest state, and it displays it on display.

The following main requirements are imposed on the server application:

- It coordinates the communication with client
- It receives client commands for the system setting
- It dispatches the information on system current state to the client
- It controls the system according to the client commands
- It reads the latest information from the system.

3 Mobile phone

There was the mobile phone Nokia 6230i employed for the system control and monitoring. That model was applied in of its 5 year old design because it supports all important Java specifications and because of its convenient dimensions unlike some current models.

4 The real system for testing

That real system used for our work results confirmation had been chosen from a couple of reasons. One of those reasons is the results vivid presentation and the other is that the events happening are "slow enough" to be controlled via mobile phone and GSM network.

The water system DTS200 (Fig.1) by Amira company contains three tanks N1, N2, and N3 which are interconnected with valves.

Each tank has an extra valve for draining the tank liquid into a container with exception of N3 that has

two drain valves. The pump P1 supplies liquid to the tank N1 and the pump P2 supplies the tank N3.



Fig. 1 Real system Amira DTS200

5 NetBeans

The development environment NetBeans IDE (Integrated Development Environment) version 6.8 was applied during both the mobile phone application and the PC server application development [1,2]. The mobile phone application was tested in the environment inbuilt emulator.

6 Java

6.1 Java Development Kit

The JDK (Java Development Kit) represents the set of basic tools for Java platform application development so that it has to be installed for all Java applications development, including JSE and JME.

6.2 Java Platform Micro Edition Software Development Kit

We need JME SDK (it replaces popular Java Wireless Toolkit) besides JDK for the mobile applications in Java [3,5].

6.3 Java Runtime Environment

Providing we plan exclusively to run Java applications, the JRE (Java Runtime Environment) installation is sufficient [6].

7 MATLAB

The adopted real system is commonly controlled from MATLAB environment (version 2007a) with Real Time Toolbox support [4]. The necessary

drivers are booted easily, and the control is possible from the command line or via the Simulink graphic environment.

8 MATLABCONTROL

Matlabcontrol is a Java API that facilitates the control and Java applications transaction with local or remote MATLAB sessions.

The Matlabcontrol interface was used for communication with the real system as a remote session in this project. It means that the Java application (the simple server running on the controlling PC in our case) creates a MATLAB session after start and it asks for technological card driver boot. The device linked to the technological card is to be controlled from Java application through MATLAB commands then.

9 Client application

The controlling and monitoring system client application was created as a project in JME NetBeans, CLDC 1.1 configuration and MIDP 2.0 profile. Unlike the server application, the client source code covers the user graphic interface and operation. The graphic interface has been created with NetBeans FlowDesigner RAD tool.

9.1 Start screen

It is a SplashScreen object and it is displayed during application start-up procedure.

9.2 Main menu

The list type screen contents main menu items – Monitoring, Controls, Application setup, About system and About application (Fig. 2).

9.3 Forms

- Monitoring submenu – displays the information about system devices what means tank water level in %, state of pumps and valves (Fig. 2)
- Controls submenu – offers the possibility to change the system devices state what means to switch on or off pumps, open or close valves (Fig. 3)
- Application setup submenu – configuration data insertion: IP address, server port, server login name and password (Fig. 3)
- About system submenu describes briefly the real system to be controlled
- About application submenu lists the application information.

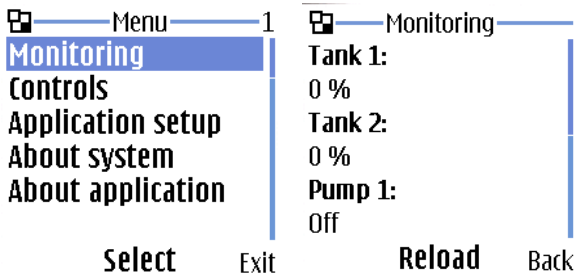


Fig. 2 Main menu and Monitoring on mobile phone.

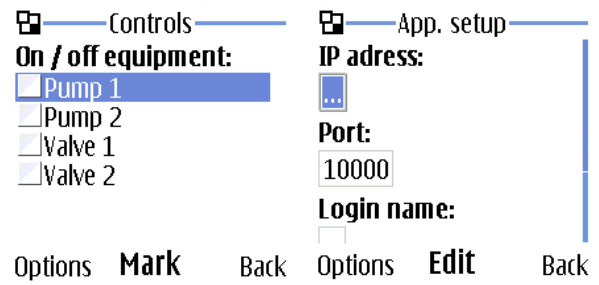


Fig. 3 Controls and Application setup on mobile phone.

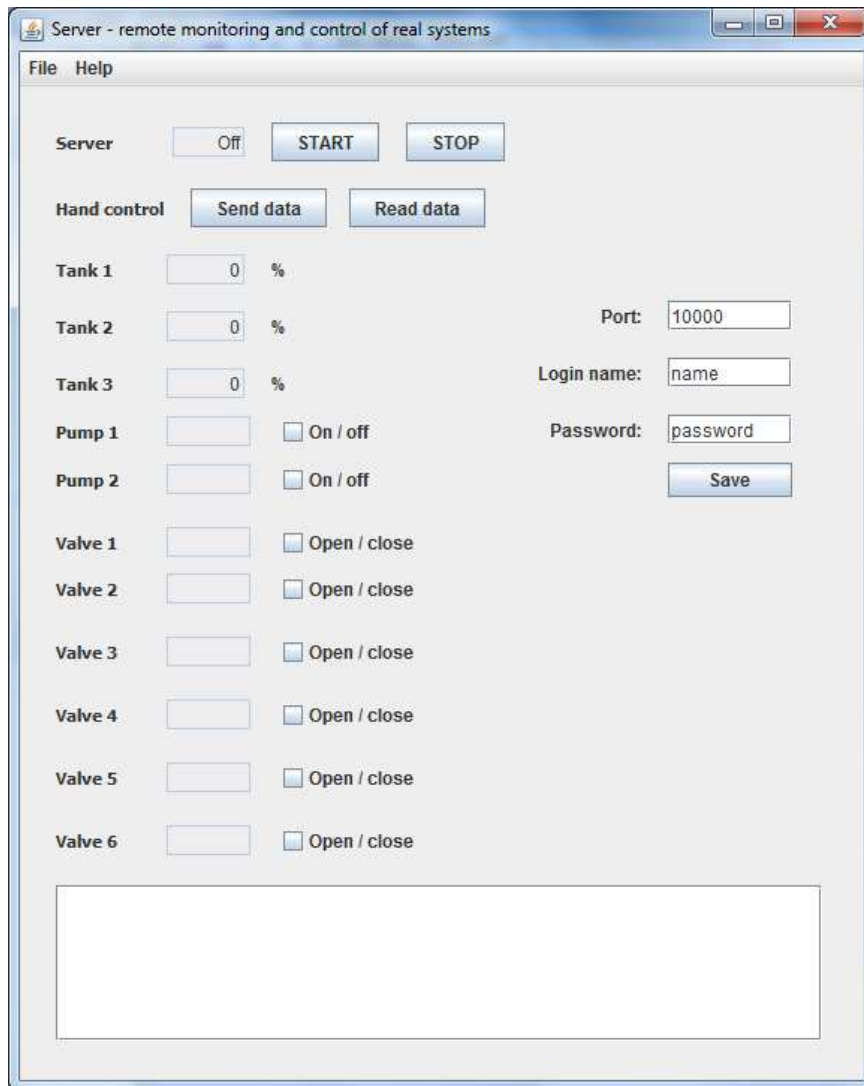


Fig. 4 Server application.

10 Server application

The control and monitoring system application was created as a project in JSE NetBeans environment.

The server is to be set before the start of first communication with the START button (Fig.4). We should insert values for port (port for the server

application), client login name and password. After communication start, the server runs and waits for a client. There are messages about communication state a information and would-be errors displayed in the text information window.

10.1 Results applicability

There is basically not necessary to install the application. The JAR (Java ARchive) file execute is enough. We can run the application on any PC with JRE and MATLAB installed. JVM (Java Virtual Machine) must not be firewall blocked if we need the network functions to be exploited, and application PC has to be connected to the Internet via public IP address.

11 Conclusion

The work goal was to develop a simple mobile monitoring and control system exploiting the GPRS/EDGE data transfer in GSM mobile network.

The mobile phone application is lucid and easily applicable. The server application is easily transferable to the other system in faculty area where majority of systems is controlled via MATLAB. We can modify our application for other systems just by MATLAB command set change so that it can be used for many different purposes, like education, research and ex-faculty applications. The costs for remote controlling and monitoring system are very low thanks to GPRS/EDGE data transfer and small data volumes.

For the next future, we would like to test the communication system parameters in nonstandard network situations like short mobile network drop-outs. The short signal drop outs because of short distance signal fluctuations (the handy in a moving

car) are concerned. The short drop-out because of radio channel full slots occupation by other network users needs to be taken into account as well.

Acknowledgements

This work was supported by the Ministry of Education of the Czech Republic in the range of research projects No. MSM 7088352102.

References:

- [1] Buchalcevova, A. & Pitka, L.: *NetBeans: Development environment*, Oeconomica, Praha, 2007, ISBN 978-80-245-1206-8.
- [2] Bock, H.: *Platform NetBeans: Detailed programming guide*, Computer Press, Brno, 2010, ISBN 978-80-251-3116-9.
- [3] Mahmoud, Q.: *Learn Java 2 Micro Edition*, Grada Publishing, Praha, 2002, ISBN 80-247-0444-7.
- [4] MathWorks: *MATLAB - The Language Of Technical Computing*, available from: <http://www.mathworks.com/products/matlab/>, cited 2011-06-29.
- [5] Topley, K.: *J2ME in epitome: Reference manual*, Grada Publishing, Praha, 2004, ISBN 80-247-0426-9.
- [6] Zakhour, S. Hommel, S. Royal, J.: *Java 6: Tutorial course*, Computer Press, Brno, 2007, ISBN 978-80-251-1575-6.