

Solutions for Traffic Lights Intersections Control

MARIUS CONSTANTIN POPESCU¹, CONSTANTIN RANEA², MIRCEA GRIGORIU²
MARIUS-CONSTANTIN POPESCU¹, CONSTANTIN RANEA²

¹Faculty of Engineering in Electromechanical, Environment and Industrial Informatics
University of Craiova, ROMANIA

² University Politehnica Bucharest, ROMANIA

marius.popescu.c@gmail.com

constantin.ranea@ancs.ro

Abstract –This work aims to achieve a program that operates the traffic light of intersections with TwidoSoft programming language. The order of priority between traffic rules is implemented in machine specific language TwidoSoft.

Key-Words: - PLC TWIDO, Programming, Ladder.

1 Introduction

Road signalling is done by light signals, signs and markings and other means provided in the road rules [6], [8]. People who use public roads must comply with the meaning of light signals, indicators, markings and signals that drive the movement of agents and drivers of vehicles. The order of priority between the rules of movement, the various means of road signs and signals that drive traffic agent is as follows [2]: special warning light and/or audible signals, policeman's signals, temporary signs that changes the normal operation of traffic, light signals, signs, markings, traffic regulations. The traffic sign and road safety equipment are designed to be installed and/or applied for public road manager in agreement with police. The meaning, and the traffic sign size, shape, symbol, colour and conditions of performance, location, installation and implementation are set by state standards [14], [15].

2 Light Signals

Signals are bright white lights or coloured differently, issued successively, continuously or intermittently for one or more lighting fixtures that make up a traffic light. Depending on the lighting fixtures, traffic lights are [17]: with a luminaire, flashing warning light, with two luminaires for pedestrians and cyclists, with three lighting devices for vehicles, with four or more lighting devices, for trams. Lights are mounted on the vertical axis of the post or on the console, the portal or suspended on cables, the lens colour sequence, from top to bottom, being as follows [9]: the order of signal lights with three colours is red, yellow, green, for the one with two lights the signal sequence is with two colours: red, green. Red-light emitting light

signals for routing traffic in the intersection before the intersection shall be compulsorily installed in order to be visible from a distance of at least 50 m. This can be repeated in the middle, above or across the intersection. The meaning of the light signals for guiding the movement of vehicles is valid for the entire width of carriageway open to traffic managers to whom they are addressed. On roads with two or more lanes on the way, for different directions, removed by longitudinal markings, traffic lights can be installed over one or some of the bands, where the meaning of light signals is limited to the band or bands as indicated. Red, yellow and green signals can be under the form of arrows of the same colour on a black background [17], [18], [19]. In this case the prohibition or permission required by the signal crossing light is limited to the direction or directions indicated by the arrows. And arrows have the same meaning if applied to an additional panel accompanying the traffic lights at the bottom. It is not allowed to enter an intersection even if the signal light or an indicator of priority allows to, if the driver of the vehicle is likely to remain restrained because traffic congestion, hindering or impeding traffic. When the traffic lights is accompanied by one or more lamps emitting light as one flashing green or arrows on a black background to the right, they only allow the passage towards the indicated direction, irrespective of the time of traffic light signals in operation. Vehicle drivers are obliged to prioritize the passage of road users they intersect with and move according to traffic light colour meaning that they address to [13]. The vehicle must be stopped before the red signal to stop marking or, where appropriate, pedestrian crossing, and in its absence, the right light. If the traffic lights are installed above or across the intersection, in the absence of the stop marking or pedestrians passage marking,

the vehicle must be stopped before the edge of carriageway of the road to be crossed. When the red signal works together with the yellow, it announces the emergence of green signal. When the yellow signal appears after the green signal, the vehicle driver who approaches the intersection must not pass the provided places, unless the occurrences of signal is so close to those places that the vehicle could not be stopped safely. Flashing yellow signal enables passing in compliance with road signs and traffic rules applicable in that place. The same meaning applies to the flashing yellow signal lamps installed in a dangerous place. When above the bands, separated by longitudinal markings are installed devices that emit red and green signals, they are meant for signalling bands with reverse circulation. Red signal, having the form of two angled and cross-over bars forbid vehicles access on the lane and the green signal, under the form of an arrow pointing down, allows the entry of vehicles and traffic on that lane. Intermediate light signal announcing green signal when changing bands is under the form of yellow or white arrows with the tip pointing towards downright diagonal. This signal notifies that the lane is about to be closed for the drivers it addresses to and that they are obliged to go to the lane or lanes indicated by arrows. Driver entering an intersection when the traffic light is green has to comply with the meaning of the signs installed inside it. Vehicles moving in actions that require intervention or emergency missions can move through intersections, even if traffic light signals prohibit passage or the existing signs require or prohibit access. Drivers of such vehicles are obliged to use early warning sound and light facilities.

Light signals for pedestrians are green and red. These work related to the signals for directing movement of vehicles. Green signal may have in its field the image of a pedestrian walking and the red one the image of a stopped pedestrian. Light signals for pedestrians may be accompanied by acoustic signals to ensure crossing for blind people. On the areas of road where traffic levels permit, the public road manager may place special traffic lights or manual command panels to be made directly by pedestrians with the approval of the police. When the green signal begins to operate intermittently it means that time allocated for crossing the road is being exhausted and the red signal follows. Red signal forbids pedestrians to engage on the carriageway.

If case of correlated lights along a route, colour timing devices as well as lighting devices that display related times and moving speed for vehicle drivers can be installed. Warning lights are installed out of the intersection and consists of a luminaire

with flashing yellow light. Its field can include the image of a moving, yellow pedestrian on black background. For signalling and routing traffic on the sectors of roads, except highways, where works are carried out on the carriageway, temporary mobile traffic lights can be installed, in order to be visible from a distance of at least 150 m [1].

2 PLC TWIDO

2.1 Presentation of Twido PLC

Twido PLC is dedicated to small and medium automatic control systems, with a number of inputs /outputs between 10 and 250. Automatic Twido range is available in two versions: compact and modular. Both versions use the same plug-ins I/O options and programming software [12]. Twido Compact is used in automated independent and simple applications (automatic doors, automatic machines, pump stations, etc.). The assembly and use of this type of automated device are very simple. The second variant, Twido Modular is used primarily in repetitive applications (industrial washing machines, washing machine facilities, elevators, woodworking machinery, compressors, etc.). This type of automated device, based on the "just enough" concept provides the ultimate solution for a machine automation [21]. Basic module can include a number of 20 or 40 inputs/outputs. For larger configurations basic module can be extended with plug-ins I/O depending on the application being used. The controller has a modular TWDLMDA 20DRT analogous channel, 12 digital inputs and 8 outputs (6 outputs with relay and 2 transistors), an analogous potentiometer, an integrated serial port, and a terminal block which accepts 7 input / output as extensions. Input voltage is 24V.

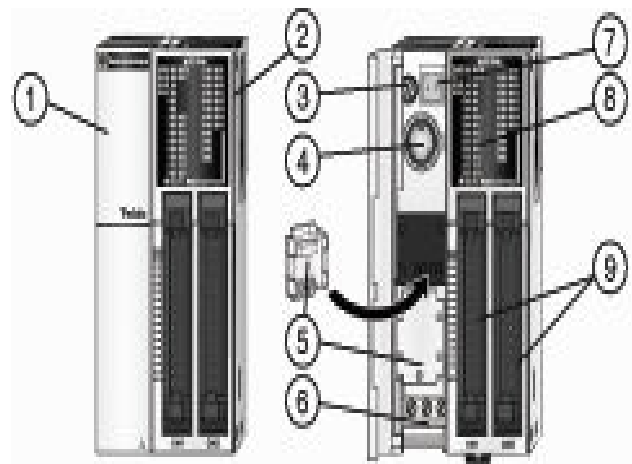


Fig. 1: Automatic TWDLMDA 20DRT.

2.2 TwidoSoft Programming Language

TwidoSoft is a graphical development environment aimed at the creation, configuration and maintenance of applications for Twido controller. TwidoSoft gives the opportunity to create different types of software applications and then to transfer a controller for these applications in order to be put into execution [10].

that describes a logical expression, like a relay logic diagram representing the control circuits of a relay - output, contacts, blocks representing instruction), Grafcet language (consists of a series of steps and transitions).

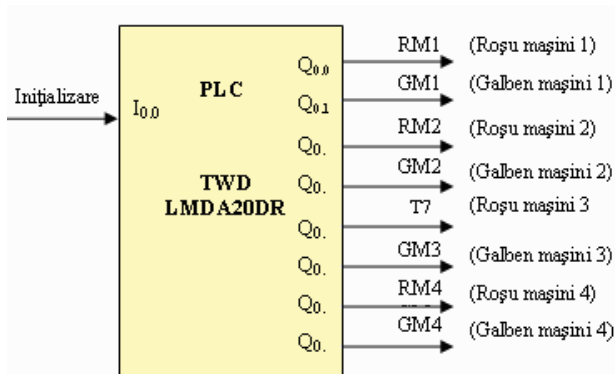
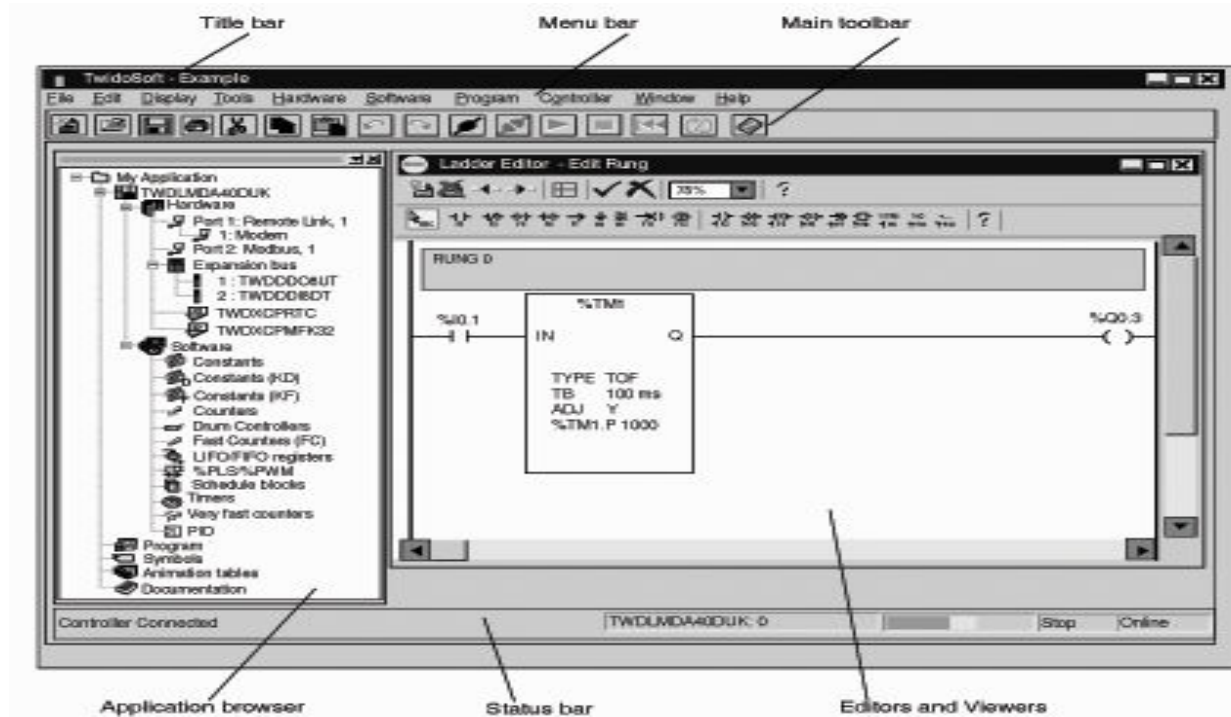


Fig. 3: Wiring diagram of automatics.

TwidoSoft can run under Windows 98, 2000 or XP and integrate additional functionality and configuration editing and online help [20]. To download the programs made with TwidoSoft the Twido machine can use special cables (TSXPXC3030 or TSXPXC1031) or you can use Bluetooth wireless technology. To create a control program for controller Twido means to write a series of instructions in one of the Twido programming languages: instructions (a set of logical expressions written as a sequence of Boolean instructions); Ladder diagram (is a graph

3 Command of a Traffic Light controlled Intersection

3.1 Wiring Diagram of the Machine at Intersection

PLC TWD LMDA 20DRT has 8 digital outputs, to which controls for lights intersection are attached according to Figure 3. A single digital input is attached to the automated device, used to initialize the program. Semaphored intersection symbolized in Fig. is divided into four groups of LEDs. We chose a semaphored intersection operating according to the four-stroke flow chart shown in Fig. in time 1 group 1 indicates green for cars and at the same time the green colour and pedestrians travelling between group 1 and 2 (red indicates other groups) in 2,3 and 4 times during the 1 they repeat for group 2, 3 and 4, then resume with 1. Given the choice of this type of operation of the intersection and that the machine has only 8 outputs: RM and GM (red cars and yellow cars). The other commands are derived from them [11], [16]:

$$VM = \overline{RM} + \overline{GM}, \quad RP = RM + GM, \quad VP = VM.$$

Resistors are chosen so that through each LED a current between 10 and 20 mA flows. Power sources for LEDs, relays and PLC are shown in Fig. For proper operation (safety) of intersection lights, LED lighting (especially those which command cars) has to be monitored so that the intersection operates normally. Monitoring can be done with optical transducers (photodiodes and photoresistors, phototransistors, etc.) Serial or current transducers with LEDs that [7]. For a malfunction, the machine has to command in flashing yellow.

3.2 The Management of the Intersection

To this end one will use TWDLMDA 20DRT machine that has 12 inputs and 8 outputs. Using only one input and all 8 outputs of the application, we can achieve the logic diagram of the application (Fig. 7). An impulse to output 10.0 applies that transmits the output instruction and the output will be interpreted by the following input rule. This input is the first moment of signalling, namely the occurrence of the red colour for the first traffic light

pedestrians P12 and P21. After the passage of time, lights will resume the same instructions, but this time for S2. S4 shows green lights for both cars and pedestrians as P3. A delay of 10 seconds for the green traffic light was set, 5 seconds to 15 seconds for yellow and red. All other lights show red for both pedestrians and for cars. Microcontroller tests whether 10 seconds have passed. If so, then S1 will be yellow and red lights for pedestrians P12 and P21 and the other lights. Microcontroller test if the last 5 seconds during the corresponding traffic light yellow colour. If passed this time, then S2 will show green lights for cars and pedestrians P23 and P32. One shall test again whether the 5 seconds passed. If passed, then S2 will show yellow lights for cars and pedestrians red for P23 and P32. The other traffic lights will show the red light for both cars and for pedestrians as well. The microcontroller tests whether the 5-second time corresponding to the yellow traffic light passed. If this time passed, then S3 will show green lights for cars and pedestrians P34 and P43. One shall test

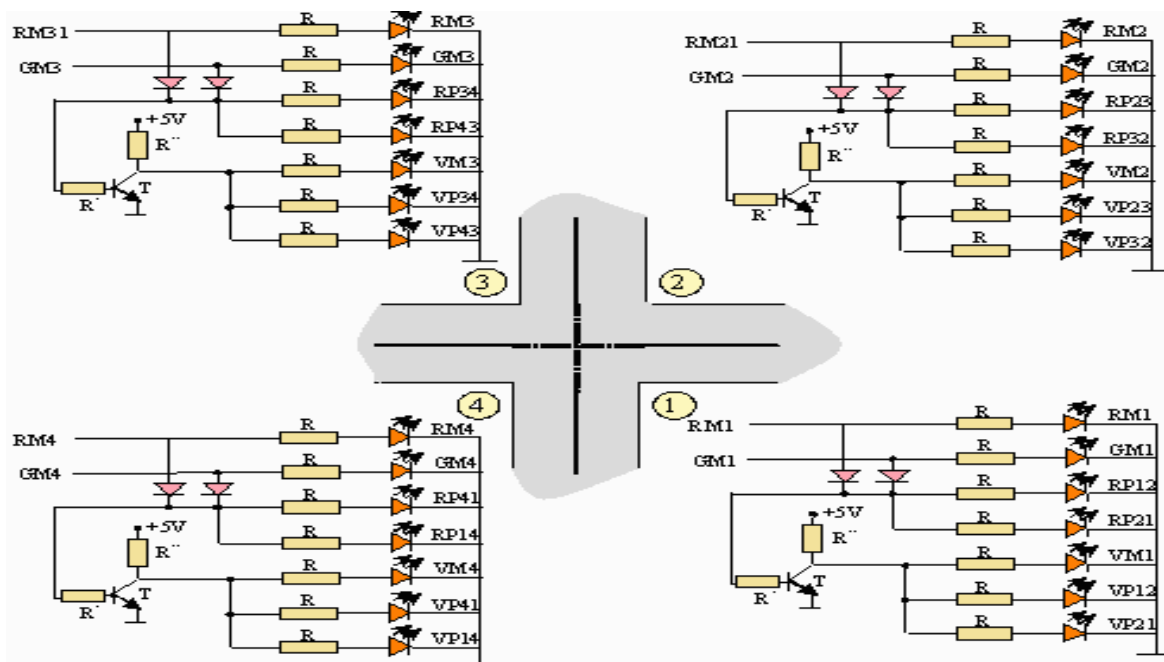


Fig. 4: Wiring diagram for power LEDs.

lights. To calculate the time for this colour type one shall use a TON timer (Timer On-Delay). After the 15 seconds allocated to the red colour, an output impulse will be issued and the program will develop the next sequence, ie a new input followed by a new timer that calculates the 5-second time allotted to the yellow colour for the machines stooped at the first traffic light, red for pedestrians P12 and P21 and for the states of the other traffic lights (Fig. 5). This output is actually an entry in the following sequence, the green colour allocation made both for the machines at the S1 and the

again whether the 10 seconds passed. If passed, then the S3 will show yellow lights for cars and pedestrians red for P34 and P43. The other lights will indicate red both for cars and pedestrians. The microcontroller tests whether the 5 seconds corresponding to the yellow traffic light passed. If this time passed, then S4 will show green lights for cars and pedestrians P14 and P41. One shall test again whether the 10 seconds passed. If passed, then S4 will show yellow lights for cars and pedestrians and red for P14 and P41. The other lights will indicate red both for cars and

pedestrians. Microcontroller tests whether the appropriate time for a second yellow traffic light passed. If this time passed the cycle resumes. In implementing the program simple inputs and denied inputs, simple outputs and TON timers were used. An input is the instruction to take back an impulse to its use in carrying out an instruction.

Depending on the type of the input (simple or denied) the result will be sent to the corresponding output. The result of the input pulse can be transmitted to the output with some delay, it is possible that timers calculated using the time elapsed from receipt until the momentum which it is transmitted to the output in

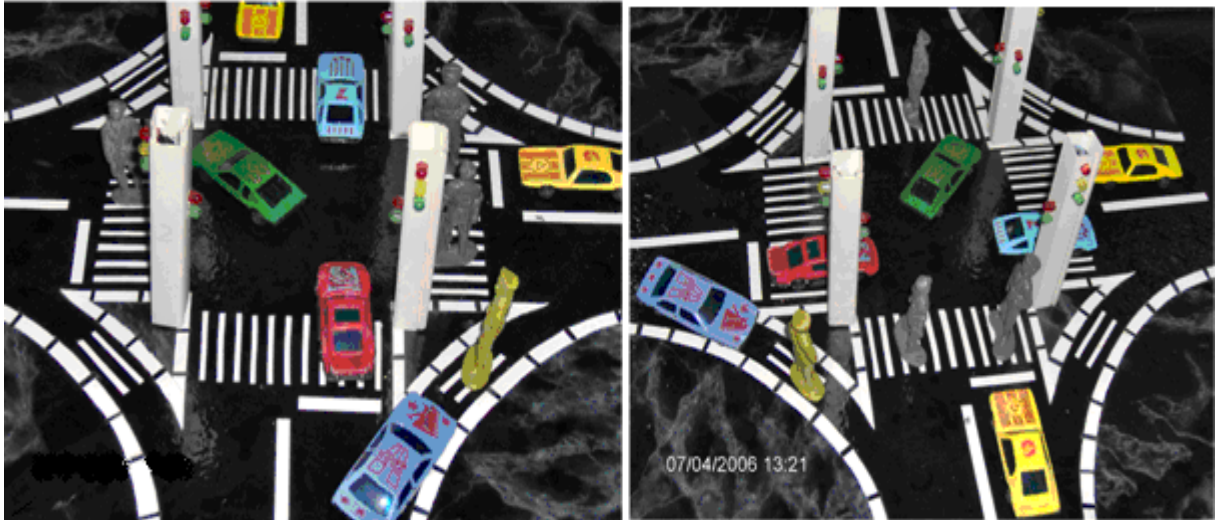


Fig. 5: Explanatory lights on an intersection.

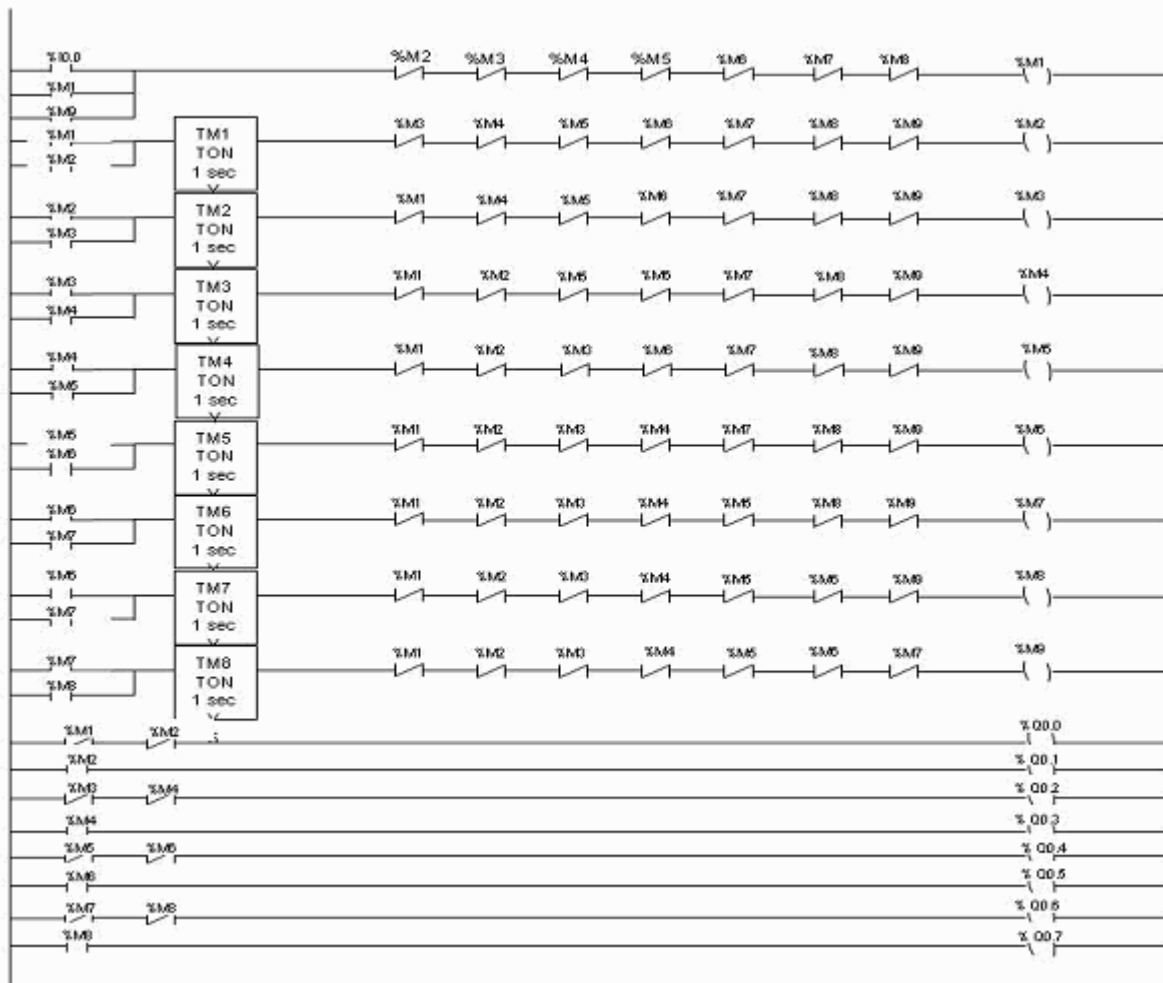


Fig. 6: Program of the intersection in order TwidoSoft (Ladder language type).

order to obtain a positive realization of the program. The following were used. I0.0 simple main input which takes the impulse, 9 simple inputs and 9 denied inputs coming from the 9 simple outputs from each sequence of the program performance, 8 timers that calculate the time between making sequences and all 8 outputs of the controller, depending on their condition and realizing the LED lighting. A TwidoSoft application contains a program (Fig. 6), a configuration, the symbols and documentation. These components can be used in any order when an application is made. Slot is Twido programming software using TwidoSoft, using a type language Ladder (IEC standard) [3], [4], [5].

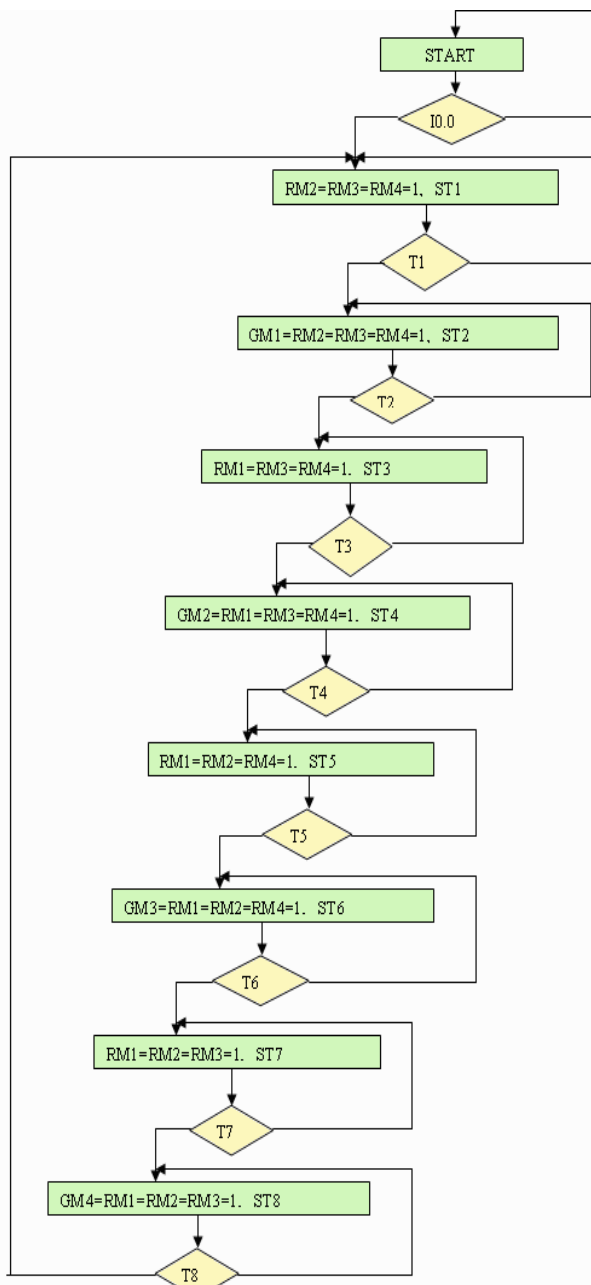


Fig. 7: Scheme logic control program for the intersection.

6 Conclusions

Responding to some questions (such as what does traffic mean for each of us?, Which are the problems encountered in the life of drivers and pedestrians?, Which is/should be role of actors in "proper circulation?, Which are the steps to follow for a better involvement of men in observing traffic rules?, solving a problem with implementing a new solution?), you can create the premises for an appropriate movement. The progress of electronic technology over the last decades has been an emergence microcontroller turning point both in terms of beach virtually unlimited field of application of these revolutionary components of technically and technologically and in terms of design and implementation of design techniques, synthesis and testing. Microcontrollers meet the qualities of applications that are used, such as flexibility, simplicity and small size. The advantages of speed, computing power and, especially, a considerable reduction of costs are quantified. This work meant for developing a programming language through a program through which TwidoSoft could perform the traffic lights of an intersection illustrates the advantages of use of such material. Also, the price of these components, becomes more and more trivial every day, for which the they are gaining ground in front of traditional components used in intersections traffic lights.

References

- [1] Borcoși I., Olaru O., Popescu M.C., Dincă A., Antonie N., Ionescu M., *Device with Analogical Circuits for Protection to the Lack of the Pulse for the Three-Phase Rectifiers in Electrical Drive*, International Journal of Mathematical Models and Methods in Applied Sciences, pp.483-492, Issue 4, Vol.2, 2008.
- [2] Boteanu N., Popescu M.C., Manolea Gh., Popescu-Perescu L., Vlase Gh., Brindusa C., *Optimal Control of Electric Drives Acceleration with Static Torque with Constant and Speed Proportional Component and Heating Outline*, Proceedings of the 11th WSEAS International Conference on Automatic Control, Modelling and Simulation, pp.178-183, Istanbul, Turkey, 30 May -1 June 2009.
- [3] Bulucea C.A, Popescu M.C., Bulucea C.A, *Real Time Medical Telemonitoring of da Vinci Surgical System* Proceedings of the 8th WSEAS International Conference on Education and Educational Technology EDU'09: New Technologies in Education, pp.106-113, Genova, October 17-20, 2009.
- [4] Bulucea C.A., Popescu M.C., Bulucea C.A., Patrascu A., Manolea Gh., *Real Time Medical Telemonitoring of Sustainable Health Care Measuring Devices*, Proceedings of the 8th WSEAS Int. Conf. on Artificial Intelligence, Knowledge

- Engineering & Data Bases, pp.202-207, Cambridge, 22-23 February 2009.
- [5] Drighiciu M., Petrisor A., Popescu M.C., *A Petri Nets approach for hybrid systems modelling*, International Journal of Circuits, Systems and Signal Processing, Issue 2, Vol.3, pp.55-64, 2009.
- [6] Drighiciu M., Manolea Gh., Petrisor A., Popescu M.C., *On Hybrid Systems Modeling with Petri Nets*, Proceedings of the 7th WSEAS International Conference on System Science and Simulation in Engineering, pp.73-78, Venice, Italy, 21-23 November 2008.
- [7] Mastorakis N., Popescu M.C., Bulucea C.A., *Analysis in Time-Frequency Domain of Asynchronous Motors Control with Inverter Switching at Zero Voltage*, Proceedings of the 8th WSEAS International Conference on Education and Educational Technology EDU'09: Advanced Educational Topics and Technologies, pp.126-132, Genova, October 17-20, 2009.
- [8] Nicola D.A., Bulucea C.A., Cismaru D.C., Brandusa C., Manolea Gh., Popescu M.C., *Energy Saving in Electric Trains with Traction Induction Motors*, Proceedings of the 4th IASME /WSEAS International Conference on Energy & Environment, pp.226-231, Cambridge, 22-23 February 2009.
- [9] Olaru O., Popescu M.C., Balas V. *A Study of Oscillation for Signal Stabilization of Nonlinear System*, Proceedings of the 10th WSEAS Int. Conf. on Automation & Information, pp.430-437, Prague, 23-25 march 2009.
- [10] Petrișor A., Bizdoacă N.G., Drighiciu M., Popescu M.C., *Control Strategy of a 3-DOF Walking Robot*, The International Conference on „Computer as a Tool”, pp.2337-2342, Warsaw, Polonia, 9-12 september 2007.
- [11] Popescu M.C., Olaru O., *Conducerea optimala a proceselor-Proiectare asistata de calculator in Matlab si Simulink*, Editura Academiei Tehnice Militare, București, 2009.
- [12] Popescu M.C., Petrisor A., *Roboți- Sisteme de control pentru roboti*, Editura Universitaria Craiova, 2009.
- [13] Popescu M.C., *Aplicații in informatica*, Editura Universitaria Craiova, 2009.
- [14] Popescu M.C., *Modelarea și simularea proceselor*, Editura Universitaria Craiova, 2008.
- [15] Popescu M.C., Popescu L.G., Grofu F., *Optimal Control of Driving Systems*, International Review of Automatic Control (Theory and Applications), November 2009.
- [16] Popescu M.C., Mastorakis N., Borcosi I., Popescu L., *Asynchronous Motors Drive Systems Command with Digital Signal Processor*, International Journal of Systems Applications, Engineering & Development, Issue 2, Vol.3, pp.64-73, 2009.
- [17] Popescu M.C., Mastorakis N., *Testing and Simulation of a Motor Vehicle Suspension*, International Journal of Systems Applications, Engineering & Development, ISSN:2074-1308, Issue 2, Vol.3, pp.74-83, 2009.
- [18] Popescu M.C., Bulucea C.A., Perescu-Popescu L., *Road Vehicle Suspension Modelling*, Proceedings of the 8th WSEAS International Conference on Education and Educational Technology: New Technologies in Education, pp.113-121, Genova, October 17-20, 2009.
- [19] Popescu M.C., Petrisor A., Manolea Gh., Tabacu C., Drighiciu M.A., *Modelling and Simulation of the Motor Vehicle Suspension*, 3rd International Symposium on Electrical Engineering and Energy Converters, “Musatinii” Publishing House Suceava, pp.219-224, September 24-25, 2009.
- [20] Popescu M.C., Onisifor O., I. Borcosi *Simulation of n-r Robots*, Journal WSEAS Transactions on Systems and Control, pp.149-158, Issue 3, Vol.3, march 2008.
- [21] www.schneider.ro