

Improvement of Histogram Equalization for Minimum Mean Brightness Error

NATTAPONG PHANTHUNA*, FUSAK CHEEVASUVIT**, SAKREYA CHITWONG**

*Electrical Engineering, **Instrumentation Engineering

*Rajamangala University of Technology Phar Nakhon, North Bangkok Campus

**King Mongkut's Institute of Technology Ladkrabang
Bangkok ,THAILAND.

*<http://www.nbk.rmutp.ac.th> , **<http://www.kmitl.ac.th>

Abstract: - This Research presents the image enhancing using a mean-separate histogram equalization method. It can preserve the original brightness to a certain extends. To provide maximum brightness preservation, . it separates the input image's histogram into 2^n based on input mean before equalizing them independently. The image initially is separated from 2 ,4 and 8 class by calculated threshold level and each class is histogram equalized to entire image, and gets lowest AMBE (AMBE : the absolute difference between input and output mean). The result found that AMBE gradually reduces when the separation is increased.

Key-Words: - Improvement histogram equalization, minimum mean brightness error, absolute mean brightness error

1 Introduction

Improvement of Histogram Equalization is a basis method of increasing contrast for an image. This is by mapping the grey scale of the input image which passed the conversion from cumulative density function. Histogram entire image will help widen the histogram with confined scattered information; therefore, the output provides high differences. This becomes popular in satellite image or radar image. The problem is that after histogram equalization, the mean of brightness of the output much converted from the original so that it can not be used as mentioned in [3]. In this article, however, the statistics is used for separating histogram of the original into 2^n group or sub-histogram ($n=1,2,3\dots$). Each group is equalized histogram independently as well as the mean brightness of each section should be kept as intended. This is to keep the mean brightness of the image after histogram equalized which mostly close to the mean brightness of the original.

In [2], the method of Minimum Mean Brightness Error Bi-Histogram Equalization (MMBEBHE) is presented. Histogram of original image is divided into two groups by grey scale X_T which is the initial threshold. The grey scale which is lower than X_T and higher than X_T must be equalized independently i.e. X_T of [2] is the result of calculated absolute mean brightness error (AMBE). Each chosen X_T , the result of mean brightness error, is reduced. Due to using all pixels in grey scale X_T ,

the incomplete mean brightness error is found. Hence, in this research, the method of selecting X_T from separated group is provided. If the suitable X_T is found, we will go further to how many pixels in grey scale X_T must be used. When the group on the left of X_T is equalized, the least mean brightness error occurred.

2 Histogram Equalization

Histogram Equalization to get HE image is determined the image as X . Density function of probability defined by

$$p(X_k) = \frac{N^k}{N_T} \tag{1}$$

When $K= 0, 1, \dots, L-1$ when N^k is the number of pixels in each grey scale that appeared in the image and X, N_T is all points in the original.

After getting $p(X_k)$, the cumulative density function of PDF is calculated that is

$$c(x) = \sum_{j=0}^k p(X_j) \tag{2}$$

When $X_k = x$, which $k = 0, 1, \dots, L-1$ and $c(X_{L-1}) = 1$ is the lowest grey scale and X_{L-1} is the highest grey scale. So that definition function of image transformation $f(x)$ refer to the cumulative density function as

$$f(x) = X_0 + (X_{L-1} - X_0)c(x) \quad (3)$$

The output image of histogram equalization, $y = \{y(i,j)\}$ can be defined as

$$Y = f(X) \quad (4)$$

$$= \{f(X(i, j) | \forall X(i, j) \in X)\} \quad (5)$$

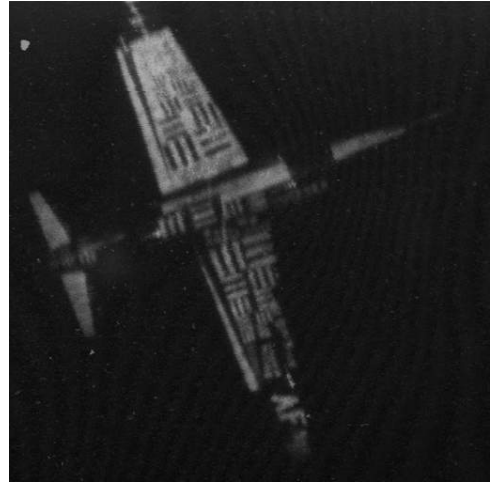


Figures 1(a) Original image of arctic hare



Figures 1(b) The output of arctic hare from HE

The above information, it can be said that the HE can significantly transfer the image brightness. For example; Figures 1(a) is the original image of arctic hare and Figures 1(b) is the histogram equalized arctic hare which consists of 256 grey scales. In Figures 1(b), it is found that the HE image darker than the original one, and there are more unnatural in each section. This is the result of HE which changed too much brightness of the image. The most interesting point in HE is that it can transferred the grey scales of the original to new grey scales with increasing the relationship of cumulative density in original and ignored the old grey scale of the original.



Figures 2(a) Original image of U2



Figures 2(b) The output of U2 from HE

Figures 2(a) is the original of U2 and 2(b) is the HE image which is brighter than the original. A lot of noise in white color occurred on the background and the plane body contrast is reduced which caused the loss of the sharpness. This is because of the limitation of HE, i.e. the mean brightness of the original image may not be used.

3 Minimum Mean Brightness Error Bi-Histogram Equalization

We can define the process in the form of a research as follow

1. Calculate to find the threshold value from cumulative density.

2. Separate the original histogram into groups or sub-histogram according to determined group which calculated from 1.

3. Independently equalize histogram into each groups as the separation in 2.

4. Calculate AMBE in each group.

Calculation the mean brightness of image X is \bar{X} which can be defined from

$$\bar{X} = \frac{\sum_{i=0}^{255} f_i g_i}{\sum_{i=0}^{255} f_i} \quad (6)$$

when f_i is grey scale frequency
 g_i is grey scale

For instance; if histogram is separate into 4 groups, the suitable threshold must be calculated, that is X_{T1}, X_{T2}, X_{T3} and will get $\bar{X}_1, \bar{X}_2, \bar{X}_3$ and \bar{X}_4 which is the mean of each group.

If N_T is all pixels in the image, the pixels in each group will equal N_1, N_2, N_3 and N_4 after the image is divided into 4 groups so that the focus can get from the following formula:

$$N_T = N_1 + N_2 + N_3 + N_4 \quad (7)$$

Since;

$$\bar{X}_T = \frac{\bar{X}_1 N_1 + \bar{X}_2 N_2 + \bar{X}_3 N_3 + \bar{X}_4 N_4}{N_1 + N_2 + N_3 + N_4} \quad (8)$$

Or:

$$\bar{X}_1 N_1 + \bar{X}_2 N_2 + \bar{X}_3 N_3 + \bar{X}_4 N_4 = N_T \bar{X}_T \quad (9)$$

The requirement is $N_T \bar{X}_T = N_T \bar{X}_{original}$ but

$$\bar{X}_1 = \frac{\sum_{i=0}^{X_{T1}} f_i g_i}{N_1}, \quad \bar{X}_2 = \frac{\sum_{i=X_{T1}+1}^{X_{T2}} f_i g_i}{N_2}, \quad \bar{X}_3 = \dots \quad (10)$$

The result is:

$$\sum_{i=0}^{N_1} f_i g_i + \sum_{i=N_1+1}^{N_2} f_i g_i + \sum_{i=N_2+1}^{N_3} f_i g_i + \sum_{i=N_3+1}^{N_T} f_i g_i = N_T \bar{X}_{original} \quad (11)$$

Require to divide histogram into 4 groups so the simple case is:

$$\sum_{i=0}^{N_1} f_i g_i = \sum_{i=N_1+1}^{N_2} f_i g_i = \sum_{i=N_2+1}^{N_3} f_i g_i = \sum_{i=N_3+1}^{N_T} f_i g_i = \frac{1}{4} N_T \bar{X}_{original} \quad (12)$$

Due to the difficulty of equation 12 e.g. in the first group if choose X_{T1} is g_5 or g_6 the equation is:

$$\sum_{i=0}^{N_5} f_i g_i < \frac{1}{4} N_T \bar{X}_{original} \quad \text{but} \quad \sum_{i=0}^{N_6} f_i g_i > \frac{1}{4} N_T \bar{X}_{original}$$

So that the pixel must be equalized from some grey scales in g_6 to grey scales g_5 to get the result as equation (12). The numbers of pixels which transferred from g_6 to g_5 is Y_1 that can be find out from equation (13) and (14)

$$f_0 g_0 + f_1 g_1 + f_2 g_2 + f_3 g_3 + f_4 g_4 + (f_5 + y_1) g_5 = \frac{1}{4} N_T \bar{X}_{original} \quad (13)$$

the result:

$$y_1 = \frac{\frac{1}{4} N_T \bar{X}_{original} - (f_0 g_0 + f_1 g_1 + f_2 g_2 + f_3 g_3 + f_4 g_4 + f_5 g_5)}{g_5} \quad (14)$$

Nevertheless, the pixels has been transferred, a few errors still occurred which is E_1 , e.g.

$$E_1 = \frac{1}{4} N_T \bar{X}_{original} - (f_0 g_0 + f_1 g_1 + \dots + f_4 g_4 + (f_5 + y_1) g_5) \quad (15)$$

When we get E_1 , it is used in 2nd group. If X_{T2} is g_{20} , it will be

$$f_6 g_6 + f_7 g_7 + \dots + f_{19} g_{19} + (f_{20} + y_2) g_{20} = \frac{1}{4} N_T \bar{X}_{original} + E_1 \quad (16)$$

When some pixels in grey scale g_{21} are equalized to join g_{20} , we get y_2 that is:

$$y_2 = \frac{(\frac{1}{4}N_T \bar{X}_{original} + E_1) - (f_6g_6 + \dots + f_{19}g_{19} + (f_{20}g_{20}))}{g_{20}} \quad (17)$$

And the error from 2nd group is

$$E_2 = (\frac{1}{4}N_T \bar{X}_{original} + E_1) - (f_6g_6 + \dots + f_{19}g_{19} + (f_{20} + y_2)g_{20}) \quad (18)$$

E_2 is found out as in equation (18). The pixels transformation will continue until before the last group. The last group cannot be transferred because we get all pixels throughout the image. Therefore, the mean brightness from histogram equalization in each group is $E(Y)$ which is used to calculate the absolute mean brightness error. That is..

$$AMBE = | E(Y) - E(X) | \quad (19)$$

When $E(X)$ is the mean of original image and $E(Y)$ is the mean of out put image from HE

Histogram of image X [2] before and after equalization (1 group) is illustrated in Figures 3(a). In this picture, histogram is not divided. Picture X is equalized in one group with the lowest and highest grey scales from 0 to 255 which scattered throughout the image.

Histogram separation into 4 groups of picture X in Figures 3(b) is found that it can be calculated threshold at 3 different grey scales i.e. X_{T1} , X_{T2} and X_{T3} sequentially.

The calculated threshold is the point of pixels transformation and error calculation of each group before continuing equalization

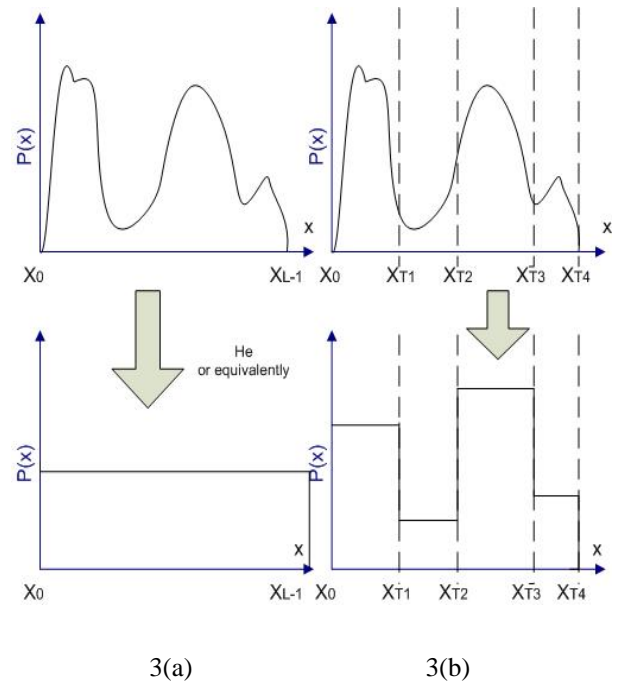


Figure 3(a) histogram before and after equalization 1 group
Figure 3(b) histogram before and after equalization 4 groups

4 Finding Analysis

when experiment and compare the out put from 5 pictures (Arctic hare, U2, F16, Clock and Aerial) the absolute mean brightness error (AMBE) is found by the method of the article in [2], [3]. And this research found that AMBE is decreased and able to keep more detail of the picture as well as more natural sharpness and brightness.

Table 1: Absolute mean brightness error (AMBE)

	AMBE						
	HE	BBHE	DSIHE	MMBE BHE	propose method		
	[5]	[2]	[6]	[7]	2 Groups	4 Groups	8 Groups
Arctichare	90.5	24.2	37.9	13.5	5.15	2.5139	0.9838
U2	96.7	13.3	41.5	6.24	4.2181	1.7764	0.7204
F16	48.7	0.35	14.6	0.02	0.0199	0.012	0.009
Clock	172.17	5.97	13.96	5.29	5.09	3.47	1.72
Aerial	122.38	9.98	20.53	0.7	5.51	2.21	0.0048

5 Conclusion

This research presents the brightness improvement which refers to and adds to the MMBEBHE (Minimum Mean Brightness error Bi-Histogram Equalization). The hub is to separate histogram by calculating to find out the suitable threshold to get the lowest AMBE. This is performed by separating the original image into 2 groups, 4 groups and 8 groups sequentially. The output of this method showed the competence of maintaining the mean brightness mostly the same as the brightness of the original image that illustrated in the table of experiment result.



Figures 4(a) Arctic hare (BBHE)



Figures 4(b) Arctic hare (MMBEBHE)



Figures 4(c) Arctic hare (2 Groups)

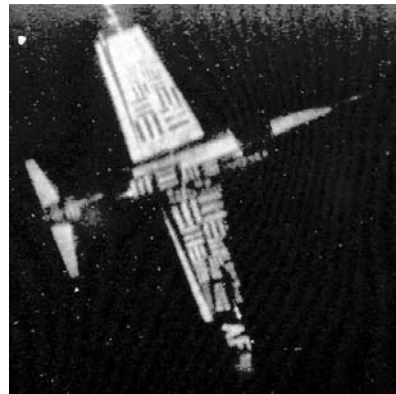


Figures 4(d) Arctic hare (4 Groups)

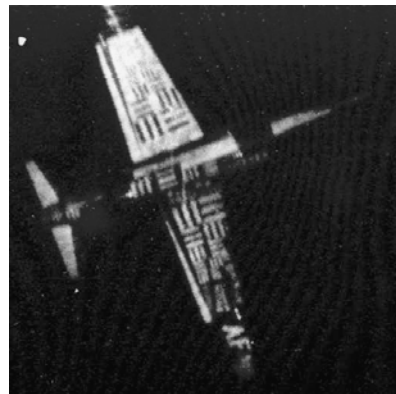


Figures 4(e) Arctic hare (8 Groups)

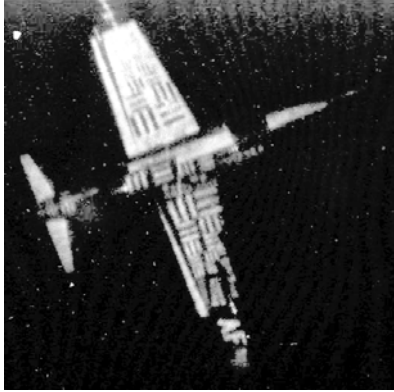
Figures 4 Output of Arctic hare in various methods



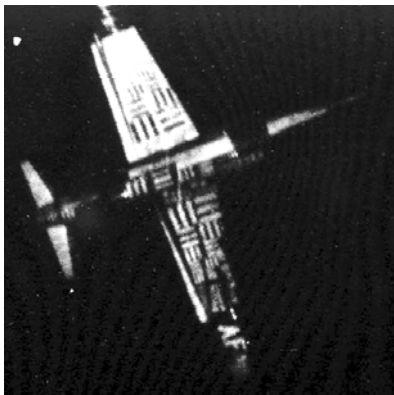
Figures 5(a) U2 (BBHE)



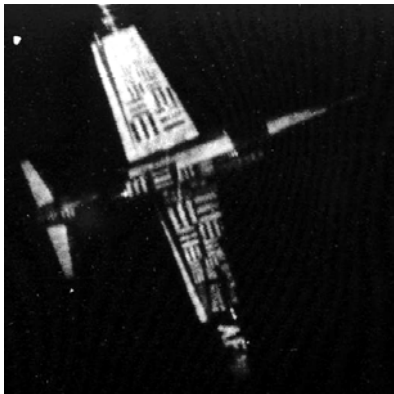
Figures 5(b) U2 (MMBEBHE)



Figures 5(c) U2 (2 Groups)



Figures 5(d) U2 (4 Groups)



Figures 5(e) U2 (8 Groups)

Figures 5 Output of U2 in various methods

The Arctic hare in Figures 4 is a picture with bright background. The result of the performance of 2, 4, and 8 groups have better mean brightness when compare with the original image which is more unnatural contrast. The 4 groups and 8 groups present more natural mean brightness;

simultaneously try to keep the continuous reduction of AMBE. Figures 5 is U2 image which is dark background image and more noise in white color can be noticeable in Figures 2(b) due to the increasing of brightness. Obviously, the equalized out put of 2 groups and 8 groups, the noise in white color in 1 group decreased and mostly disappeared in 4 groups and 8 groups.

References:

- [1] J.S.Lim, "Two-Dimensional Signal and Image Processing", *Prentice Hall*, Englewood Cliffs, New Jersey, 1990.
- [2] Yeong-Taeg kim, "Contrast Enhancement Using Brightness Preserving Bi-Histogram Equalization", *IEEE Transactions on Consumer Electronics*, February, 1997.
- [3] Scott E Umbaugh, "Computer vision and Image Processing", *Prentice Hall* : New Jersey, 1998.
- [4] Yu Wan, Qian Chen and Bao-Min Zhang., "Image Enhancement Based On Equal Area Dualistic Sub-Image Histogram Equalization Method." *IEEE Transactions Consumer Electronics*, February, 1999.
- [5] Young-tack Kim and Yong-hun Cho, "Image Enhancing Method Using Mean-Separate Histogram Equalization", *United Stated Patent*, Patent No.5,963,665, Oct 5, 1999.
- [6] Yu Wan, Qian Chen and Bao-Min Zhang, "Image Enhancement Based on Equal Area Dualistic Sub-Image Histogram Equalization Method", *IEEE Transactions on Consumer Electronics*, vol. 45, no.1, pp. 68-75, Feb. 1999.
- [7] Soon-Der Chen, "Minimum Mean Brightness Error Bi-Histogram Equalization in Contrast Enhancement", *IEEE Transactions on Consumer Electronics*, November, 2003.
- [8] Soon-Der Chen, "Contrast Enhancement using Recursive Mean-Separate Histogram Equalization for Scalable Brightness Preservation", *IEEE Transactions on Consumer Electronics*, November, 2003.